



# Daily Routine Cards

TRANSITIONS and TUNES  
for GROUP TIME

## Group Time Routines

MORNING		AFTERNOON	
Circle Time: <b>Literacy/Social Emotional</b>	Group Time: <b>Art</b>	Group Time: <b>Math</b>	Group Time: <b>Music &amp; Movement</b>
Transition Song	Transition Song	Transition Song	Transition Song
Hello (Name of Child)	Days of the week/Weather	Number Fingerplay	Storytime
<b>Literacy Activity</b>	<b>Art Activity</b>	<b>Math Activity</b>	<b>Music Activity</b>
Letter Song	Color Song	Shape Song	Yoga Stretches

## TRANSITION INTO: GROUP LITERACY

### It's Time to Start Our Day

Tune: Oh My Darling Clementine

It's time to start our day.

It's time to start our day.

It's time to give a great big cheer

'Cause Circle Time is here!

Hooray!

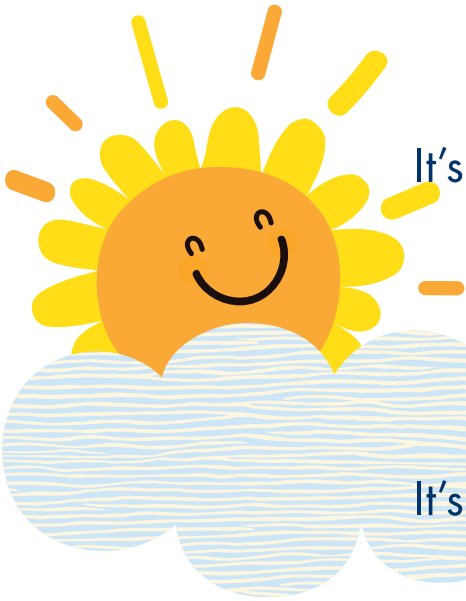
Sit on the rug with me.

Sit on the rug with me.

It's time to give a great big cheer

'Cause Circle Time is here!

Hooray!



Group Routine Card  
© 2021 Experience Early Learning Co.

## Hello Song

Pat your knees while singing. Wave at the child at end of verse.

Then, repeat for each child

Hello (child's name)! Repeat 3 times and wave each hello.

We're so glad you're here today.



Group Routine Card  
© 2021 Experience Early Learning Co.

## LETTER

### Letter Animal Parade

- Show the letter card. Make the letter sound together.
- Then, ask another child to point at the animal. Make the animal sound together.
- Play the letter's song and follow the leader around the room while moving like that animal.

Optional: Invite children to hold onto a parachute and walk round and round while the song plays.



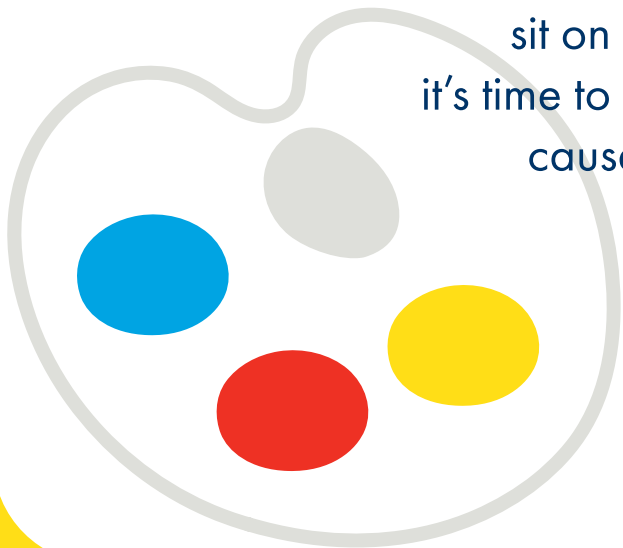
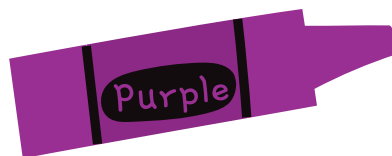
Group Routine Card  
© 2021 Experience Early Learning Co.

## TRANSITION INTO: GROUP ART

### It's Time to Make Art

Tune: Farmer in the Dell

Sit at the table with me,  
sit on the table with me,  
it's time to give a great big cheer  
cause art time is here.



Group Routine Card  
© 2021 Experience Early Learning Co.

# DAYS of the WEEK

Tune: Farmer in the Dell

There are 7 days,  
there are 7 days,  
there are 7 days in a week.

Sunday - Monday - Tuesday- Wednesday  
Thursday - Friday - Saturday



Group Routine Card  
© 2021 Experience Early Learning Co.

# Weather Song

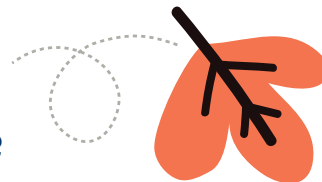
Tune: Clementine



What's the weather?  
What's the weather?  
What's the weather like today?  
Is it sunny? (make big circle with arms)  
Is it raining? (wiggle fingers down)  
Is it cloudy out today? (cover eyes)



What's the weather?  
What's the weather?  
What's the weather like today?  
Is it snowing? (hug self and shiver)  
Is it windy? (move arms side to side in front)  
Or do you hear a thunderstorm? BOOM! (stomp!)



Group Routine Card  
© 2021 Experience Early Learning Co.

## COLOR SONG

### What color are you wearing?

Tune: Mary Had a Little Lamb

If you're wearing red today,  
red today, red today.

If you're wearing red today,  
Raise your hand and say hooray!

Repeat the song and change the color.



Group Routine Card  
© 2021 Experience Early Learning Co.

## TRANSITION INTO: GROUP MATH

### Math Song

Tune: Farmer in the Dell



Sit at the table with me,  
sit at the table with me,  
it's time to give a great big cheer  
cause math time is here.



Group Routine Card  
© 2021 Experience Early Learning Co.

# NUMBER FINGERPLAY

## 5 Little Friends

Tune: Wheels On the Bus

**5** little friends go clap clap clap

Clap clap clap, clap clap clap!

**5** little friends go tap tap tap

Tap tap tap, tap tap tap!

**5** little friends go round and round

Then one lies on the ground.

**4-3-2-1** little friends...

Now all are asleep on the ground...

Shhhhhhhh...

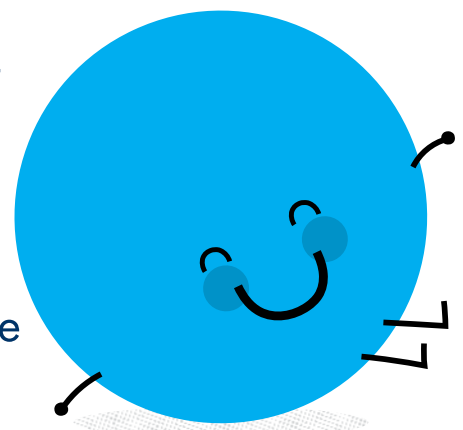


Group Routine Card  
© 2021 Experience Early Learning Co.

# SHAPE

## Shape Toss

- Show the shape at the table and name it. Put it in the middle of the table. (if you introduced a different shape the month before, place that shape on the table too.)
- Give each child a pompom to put on the shape you name.
- Next, play the shape song and invite children to toss their pompoms at the shape hanging on the wall. Repeat the name of the shape while the song plays.



Group Routine Card  
© 2021 Experience Early Learning Co.

## TRANSITION INTO: GROUP MUSIC

### It's Time to Dance and Sing

Tune: Farmer in the Dell

Sit at the table with me,  
sit at the table with me,  
it's time to give a great big cheer  
cause music time is here.



Group Routine Card  
© 2021 Experience Early Learning Co.

## YOGA

### Three Poses

Choose three yoga poses and do each to the count of 10,  
then switch to the next.

Continue to repeat all three poses over and over.



Group Routine Card  
© 2021 Experience Early Learning Co.

## HALL SONG

### Can You Sit on the Wall?



Tune: Do Your Ears Hang Low

Can you sit on the wall  
And tap your knees with me  
Can you sit on the wall  
And tap your knees with me  
Can you sit on the wall  
And tap your knees with me  
Can you sit on the wall?

... and pat your head with me  
...touch your toes with me  
...And pop your nose with me

Group Routine Card  
© 2021 Experience Early Learning Co.

## CLEAN UP SONG

### Heigh-ho, Heigh-ho, Clean Up

Tune: Heigh-ho, Heigh-ho

Heigh-ho, heigh-ho,  
It's clean-up time, you know.  
Put the toys away for another day,  
Heigh-ho, Heigh-ho!  
Heigh-ho, Heigh-ho!



Group Routine Card  
© 2021 Experience Early Learning Co.